



sensorbee

Sensorbee Air Quality Monitoring Solution



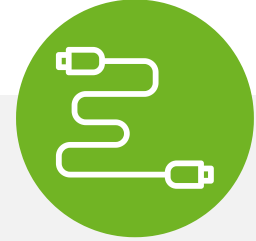
Quality Data in a Small Form Factor

The Sensorbee air quality system features many advanced sensors, providing precise data using calibrated sensors. Sensor data is buffered during network or power outages. Weighing 0.5 kg, the unit blends into city landscapes seamlessly.



Seamless Connectivity & Powered by Solar Panel

Low-power design and rechargeable batteries enable easy solar panel or street light power usage. It utilizes low-power GSM technology NB-IoT and LTE M for dependable long-range coverage. The integrated GPS identifies and shows all connected units, simplifying maintenance and planning.



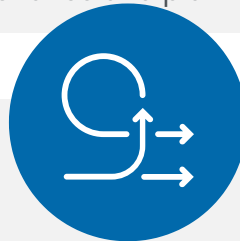
Versatile Connectivity with Modbus RS 485

Sensorbee provides air quality solutions with Modbus RS 485 connectivity for seamless integration into diverse systems and use cases. Our advanced technology ensures adaptability across applications and environments.



Ease of use

Sensorbee's sleek and user-friendly app interface offers access to the modular system. It enables remote data collection setup, live vital information control, and critical data alerts. Effortlessly register each Sensorbee Air Quality unit via QR code using an Android/iOS device or computer.



Flexibility

Every Sensorbee Air Pro base unit includes two ports for connecting external power and sensors. Various external sensors, such as weather station sensors, can be integrated into the system to enhance its capabilities.



Ambient Noise

Meet Sensorbee's Ambient Noise Enhancer, a smart software upgrade for Air Quality Sensors. With cutting-edge dBA tech, it enables real-time noise monitoring alongside air quality metrics through your existing Sensorbee devices. A feature to elevate your environmental monitoring capabilities!

Sensorbee Air Pro Cellular

Sensorbee Air Pro, is a versatile air quality monitoring solution for cities, industries, and researchers. This modular system measures particles, temperature, humidity, and up to three gases, with options to add, noise, wind, rain, and more to fit your needs.

Offering real-time data access via mobile networks, NB-IoT, and LTE-M connectivity, and featuring easy installation, low ownership cost, and solar panel compatibility, it's an eco-friendly choice for monitoring.



Product specification type SKU SB3323 and SB3324

Communication

LTE Cat M1 or NB-IoT with Nano SIM card

Dimensions

81 x 56 x 148 mm

Weight

0.5kg

Enclosure

Polycarbonate & Polyamide

Operating Temperature

-20 °C to +60 °C

Operating Humidity

0 to 99 %RH

Power Consumption

0.05-1 W (depending on configuration)

Versions Battery

SB3323 for use in general climate
(3300 mAh batteries)

SB3324 For optimal battery function in
persistent sub-zero climates (2800 mAh,
Low-temp batteries)

Data Buffer/Logging

10k periods of sample data

Sampling Frequency

From 1 min to 24 hours

Remote Management

Configuration from portal and app

Modules Supported

1 AQ front module, 3 x Gas modules

External Sensor Connector

1 Sensorbee Tag connector

External Power Connector

External power either with 5V-12V
fixed power or Sensorbee Solar Panel

Regulatory Compliance

CE Mark

Mounting

Pole/Wall mounting bracket

Sensorbee Air Lite Cellular

Sensorbee Air Lite, a cost-effective air quality solution for mass deployment or complementing Air Pro. Ideal for monitoring particulate matter, temperature, humidity, and noise via a software add-on license. Access real-time data through mobile networks, NB-IoT, and LTE-M connectivity.

This eco-friendly, non-modular device ensures easy installation, flexibility, and low ownership costs, with or without a solar panel. Experience seamless air quality monitoring with Air Lite.

Product specification type SKU SB3331 and SB3332

Communication

LTE Cat M1 or NB-IoT with Nano SIM card

Dimensions

81 x 45 x 148 mm

Weight

0.4 kg

Enclosure

Polycarbonate & Polyamide

Operating temperature and humidity

-20 °C to +60 °C, 0 to 99 %RH

Versions:

SB3331 - integrated with Solar panel

- Battery 2800 mAh (Li-Ion, re-chargable)

SB3332 - External power

- External power (5V-12V) Connector
(power cable not included, No Battery)

Regulatory Compliance

CE Mark

Particulate matter

PM1, PM2.5, PM10

Temperature Sensor

Range and Accuracy

-20°C to 60°C, ± 0.3°C

Humidity Sensor

Range and Accuracy

0...100 %RH, ±3 %RH

Noise Meter (extra license required)

Range: 50-100 dBA

Typical accuracy: ±4 dBA

Sampling Frequency

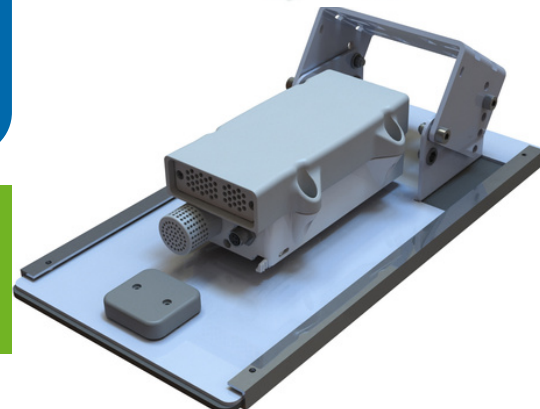
From 5min to 24 hours

Remote Management

Sensorbee portal or LWM2M server

Mounting

Pole/Wall mounting bracket



Sensorbee Air Pro Modbus RTU

Sensorbee Air Pro Modbus Edition, a versatile air quality monitoring solution ideal for smart-city, industry 4.0, port, mining, and other applications where cable connectivity is preferred.

This modular system measures particles, temperature, humidity, and up to three gases, with options to add noise wind, rain, and more to fit your needs. Featuring Modbus over RS485 communication, easy installation, low ownership cost, it's the perfect choice for measuring air quality.



Product specification type SKU SB3353

Communication

Modbus RTU (RS485)

Dimensions

81 x 56 x 148 mm

Weight

0.5kg

Enclosure

Polycarbonate & Polyamide

Operating Temperature

-20 °C to +60 °C

Operating Humidity

0 to 99 %RH

Power Consumption

1-3 W (depending on configuration)

Sampling Frequency

From 10 sec to 24 hours

Configuration

Sensorbee product configuration software

Modules Supported

1 AQ front module, 3 x Gas modules

Connector

1 Cable gland with internal RS485 Terminals

External Sensor Connector

1 Sensorbee Tag connector

Regulatory Compliance

CE Mark

Mounting

Wall mounting bracket

Sensorbee Air Lite Modbus RTU

Introducing Sensorbee Air Lite Modbus Edition, a cost-effective air quality solution perfect for smart-city, Industry 4.0, port, mining, and other applications where cable connectivity is preferred. This efficient system measures particulate matter, temperature, humidity, and noise.

Access real-time data through Modbus over RS485 communication. The eco-friendly, non-modular device ensures easy installation, flexibility, and low ownership costs. Experience seamless air quality monitoring with Air Lite Modbus Edition.

Product specification type SKU SB3352

Communication

Modbus RTU (RS485)

Dimensions

81 x 45 x 148 mm

Weight

0.4 kg

Enclosure

Polycarbonate & Polyamide

Operating temperature and humidity

-20 °C to +60 °C, 0 to 99 %RH

Battery

3400 mAh (Li-Ion, rechargeable)

Connector

1 Cable gland with internal RS485
Terminals

Regulatory Compliance

CE Mark

Particulate matter

PM1 ,PM2.5, PM10 (Sensirion SPS30)

Temperature Sensor

Range and Accuracy
-20°C to 60°C, ± 0.3°C

Humidity Sensor

Range and Accuracy
0...100 %RH, ±3 %RH

Noise Meter (extra license required)

Range: 50-100 dBA
Typical accuracy: ±4 dBA

Sampling Frequency

From 5min to 24 hours

Configuration

Sensorbee product configuration
software

Mounting

Pole/Wall mounting bracket



Sensorbee Ambient Noise add-on License



Introducing our ambient noise license, specially designed for use with Sensorbee Air Pro and Sensorbee Air Lite units. The license enable you to enjoy uninterrupted Ambient noise service for the full lifespan of your base unit, even if sensor modules are exchanged.

Product specification Module SKU SB1101

The Sensorbee Ambient noise enhancer is an innovative software upgrade designed to enable your Sensorbee Air Quality Sensors to also measure noise levels in your environment. Built with advanced dBA noise calculation technology, our add-on license allows your existing Sensorbee units to capture, analyze, and report noise pollution data in real-time, along with the air quality metrics.

Our add-on software license integrates seamlessly with your current Sensorbee Air Quality Sensors, turning them into comprehensive air and noise pollution monitors. The license are valid for a base unit over the full use, even if sensor modules are being exchanged during service life.

Our license tokens can be brought and installed in three ways. Firstly, you can order the base unit together with a noise license, and the license will be at factory.

Alternatively, you can enable the license through the Sensorbee cloud service or receive a licence token generated specifically for your base unit and install the token to the device using a terminal.

The accuracy of the ambient noise sensor are determined by each product. for more information look at Sensorbee Pro front module as well as Sensorbee Lite product specifications.