



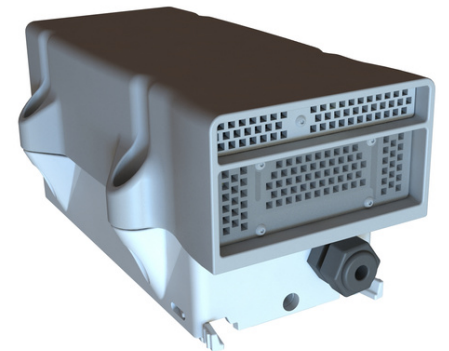
**sensorbee**

# Sensorbee Air Pro Gas Extender Unit

Upgrade your Sensorbee Air Pro setup with the Gas Extender Unit, compatible with both the Cellular and Modbus versions.

Easily increase your monitoring capacity by connecting up to three additional gas modules, for a total of six gas sensors.

Simply attach the Extender Unit to the Air Pro base with the M8 sensor extension connector.



## SB3395 – Gas Extender

### Modules Supported:

3 x Gas modules

### Connection:

Connect attached cable to a Sensorbee Air Pro base unit using the external sensor connector (Cellular or Modbus)

### Mounting:

Pole/Wall mounting bracket included.

### Dimensions:

140 x 80 x 65 mm

### Weight:

0.4 kg

### Enclosure:

Polycarbonate & Polyamide

### Operating Temperature:

-20 °C to +60 °C

### Operating Humidity:

0 to 99 %RH

### Regulatory Compliance:

CE

# Sensorbee Solar Panels

The 7W and 14W solar panels offer flexible mounting options for installation on poles or walls.

With adjustable angles to maximize sun exposure, these panels provide a sustainable and efficient power solution.

They can be easily connected to the Air Pro Cellular or Air Lite Cellular units via the power connector.



## SB6102 – 7W Solar Panel

## SB6103 – 14W Solar Panel

### 7W Solar Panel:

**Dimensions:**

290 x 150 x 110 mm

**Weight:**

0.9 kg

### 14W Solar Panel:

**Dimensions:**

290 x 280 x 110 mm

**Weight:**

1.3 kg

**Connector:**

0.5 m cable with M8F-4 connector

**Mounting:**

Pole/Wall mounting

2x Steel Hose Included

**Regulatory Compliance:**

CE

**Operating Temperature:**

-20 °C to +60 °C

**Operating Humidity:**

0 to 99 %RH

# Sensorbee Power Cables



The Sensorbee Pro Cellular and Lite Cellular systems offer multiple power options, compatible with fixed sources or solar panels. Each comes with a female M8 4-position connector.

Various lengths of M8 to USB power cables are available, and can be adapted for a 12V source.

If the distance between the solar panel and the system is too short, a 2M-long M8-M8 extension cable is available for added reach.

A 5V 1A USB adapter with interchangeable blades is also offered.

## SB901x – USB Power Cable

## SB902x – Power Cable Extender

## SB9031 – 5V 1A USB Power Adaptor

### SB9011 Power Cable:

2M Length, M8 to USB-A connector

### SB9013 Power Cable:

5M Length, M8 to USB-A connector

### SB9014 Power Cable:

10M Length, M8 to USB-A connector

### SB9022 Power Cable Extender:

2M Length, Male M8 to female M8 connector

### SB9031 Power Adaptor:

5V 1A USB Power Adapter

Input: 100-240VAC

Output: 5V, 1A, USB-A

Included blades: EU, UK, US

Operating Temperature: 0 °C to +40 °C

# Sensorbee External Sensor Cables



Extension cables for external sensors are available to ensure flexible placement options. These cables come in lengths of 1m (SB9112), 2m (SB9114), and 5m (SB9116). Each cable features two M8 connectors with 6 pins. For setups requiring multiple connections, a Y-splitter (SB9131) is provided, allowing for the simultaneous connection of two or more devices.

**SB9112 – 1 m Sensor Cable**

**SB9114 – 2 m Sensor Cable**

**SB9116 – 5 m Sensor Cable**

**SB9131 – Sensor Cable Splitter**

**SB9112:**

1 m Sensor Cable Extender

**SB9114:**

2 m Sensor Cable Extender

**SB9116:**

5 m Sensor Cable Extender

**SB9131:**

Sensor Y-Type Cable Splitter 2 to 1  
Y Splitter – Female ; Female ; Male

**General Information**

**Connector Size:**

M8

**Number of Positions:**

6

**IP Rating:**

IP67

**Operating Temperature:**

-30 °C to +60 °C

**Operating Humidity:**

0 to 99 %RH

**Regulatory Compliance:**

CE Mark