



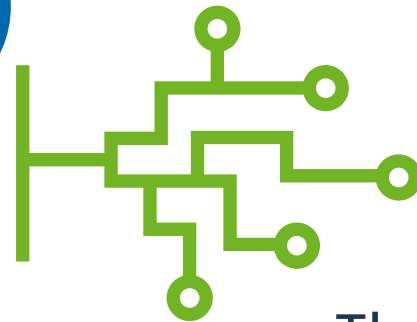
sensorbee

How does it work?



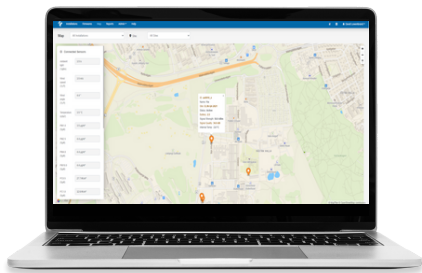
The Sensors

Our sensors are powered by solar panels or Power Supply.



The data

Real-time pollutants and data sent via the cellular network.



Storage and conversion

The data is stored and converted in the Sensorbee Cloud or the device is connected directly to a third-party cloud server.



Access your data

You access and use your data via the Sensorbee Web App or through the third party user interface.



Sensorbee Cloud and Apps

Sensorbee support several back-ends by integrating LWM2M protocol in the devices. This gives access to a multitude of back-ends that support this protocol as well as Sensorbee portal. You can start using the Sensorbee portal and later move to other Back-end. Azure IoT and Amazon IoT cloud services can also be used by an existing integration.

The Sensorbee portal provides a view of the historical data and update the different settings such as Sampling Time Interval and Alert Notifications.

Mobile Apps available for easy installation.

Access to System

Web portal

Device/Back-end protocol

LWM2M

API Sensorbee cloud

Azure IoT and Amazon IoT integrations

PUSH API and REST API

Sensor Data Download

From Portal export data to CSV file, raw data or in specific periods

Fleet Health and settings

Handled by LWM2M Server

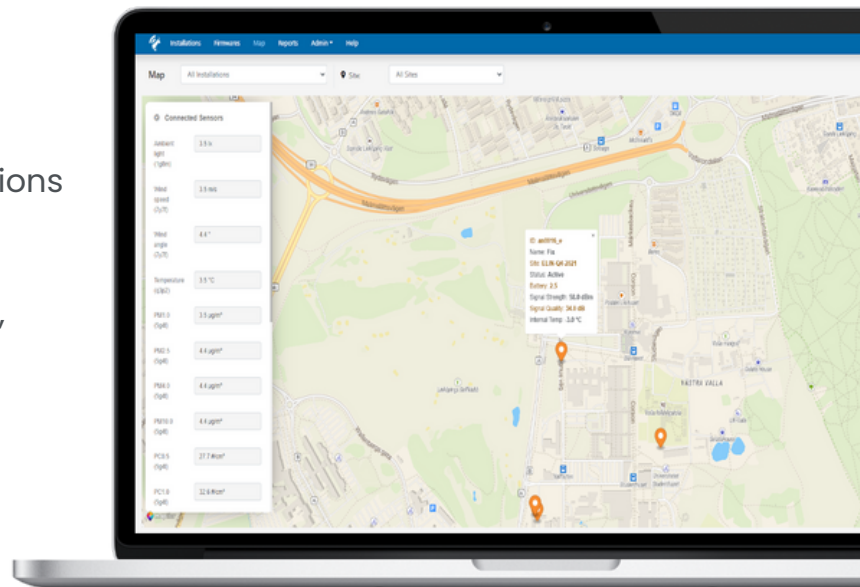
Settings, Connection, GPS Battery, error logs

Firmware Update

Handled by LWM2M Server

Notifications

Email and SMS



LightweightM2M
specified at oma